

Ultrasound System DUS - 5000 Plus



Ultrasound

DUS-5000 PLUS

Powerful Technologies to Be Your Portable Right Assistant

The Advanced® DUS-500 Plus Digital Ultrasound Diagnostic Imaging System is an impressive new compact ultrasound system, providing superb value and the best quality across the entire range of applications with enhanced support of PW/CW, color doppler flow imaging, power doppler imaging, pulse wave doppler imaging to meet the higher diagnostic requirements.

Standard Features

Imaging Modes

B-Mode (B)

Tissue Harmonic Imaging (THI)

Pure Inversion Harmonic Imaging (PHI)

Color Flow Mapping (CFM)

Power Doppler Imaging (PDI)

Directional Power Doppler Imaging

(DPDI)

Tissue Doppler Imaging (TDI)

Pulsed Wave Doppler (PW)

Continuous Wave Doppler (CW)

M-Mode (M)

Color M mode (CFM+M)

Anatomic M-Mode (AMM, Steer M)

Functions

2D Speckle Reduction & Edge Enhanced
(2D μ -scan)

Spatial Compound Imaging (SCI)

PW auto trace

SR Flow Imaging

Trapezoid imaging

Real-time 2DPanoramic Imaging

Dual Live

Lateral Gain Compensating (LGC)

Auto (One button optimization for 2D/
M/CW/PW)

Image Rotation Function

Auto IMT measurement

TEI index

Biopsy guide

VIS-Needle (Needle Visualization
Enhancement)

Panoramic Imaging (Real-time 2D)

Full screen zoom

Show gallery

DICOM 3.0:

WIFI (DICOM)

Triplex

Meets ISO 13485 Quality Standard.

Two years warranty.



2 YEARS
warranty

Technical Specifications

General	Display	15.6" inch widescreen and high resolution color LCD monitor		
	Gray Scale Resolution	256 levels 1920*1080		
	Image Mode	B- B-Mode (B) Tissue Harmonic Imaging (THI) Pure Inversion Harmonic Imaging (PHI) Color Flow Mapping (CFM) Power Doppler Imaging (PDI) Directional Power Doppler Imaging (DPDI) Tissue Doppler Imaging (TDI) Pulsed Wave Doppler (PW) Continuous Wave Doppler (CW) M-Mode (M) Color M mode (CFM+M) Anatomic M-Mode (AMM, Steer M) Imaging modes: B/ 2B/ 4B/ M/ THI/ PHI/ CFM/ PDI/ DirPDI/ PW/ CW	Functions 2D Speckle Reduction & Edge Enhanced (2D μ -scan) Spatial Compound Imaging (SCI) PW auto trace SR Flow Imaging Trapezoid imaging Real-time 2DPanoramic Imaging Dual Live Lateral Gain Compensating (LGC) Auto (One button optimization for 2D/M/CW/PW) Image Rotation Function Auto IMT measurement TEI index Biopsy guide VIS-Needle (Needle Visualization Enhancement)	
	Applications	Abdominal, Obstetrics, Urology, Cardiology, Pediatrics, Small Parts, Superficial, Gynecology, Vascular Peripheral, Musculoskeletal, Pain management/anesthesiology, Emergency Medicine.		
Functions	Zoom	Real- time and frozen images (Ratio: 0.8-10 times)		
	Cine Review	429 color / 1500 macros in white and black		
	Storage Capacity	Integrated memory 500MB Ability to incorporate external memory via USB		
	Body Mark	130 Types		
	Image Process	Dynamic range: 20 -200 dB. 2B and 4B Mode	Partial relative gain, partial control 8 Adjustable Segments (TGC).	
	Image Accuracy Parameters	Comprehensive packages of measures for different Image modes (B-Mode, M-Mode, PW, CW) and different specialties such as : Pure Gynecology , Obstetrics, Small Parts , Urology, Musculoskeletal,Vascular, Neonatology, Anesthesia and Emergency, Paediatrics, Traumatology and Rheumatology. Automatic generation of final reports and general reports .		
	Display	Date, Time, Transducer Frequency, frame Type, Patient Name, Patient ID,Hospital Name, Measured Values , Body Marks, Annotations, Transducer Position, Full Image Editing.		
	Others Ports and Perifericos	2 USB Ports S-Video	Network Port for Dicom 3.0 Lithium Battery: Continuous work for 90 minutes	
		Remote Port		
	Dimensions and Weight	61mm (H) x 378mm (W) x 340mm (D) Net Weight: 4.10 kg (with battery)		
	Power Supply	100V-240V – 50Hz/60Hz		
Environmental Conditions	Temperature: +10°C+40°C Relative humidity range: 30% -85% (no condensation)	RH (non-condensing) Atmospheric pressure: 700-1060hPa		
Storage and Transportation Environment	Temperature: -20 °C ~ +55 °C Relative humidity range: 20%-90% (no condensation)			
Transducers	Transducers	One transducer connector (1 conector de transductor con expansion opcional disponible) 128 element convex array 3C-A (Abdominal, Obstetrics, Gynecology), 1.0-7.0MHz/ R50mm 128 element linear array L741 (Vascular, Small Parts, MSK etc.), 4.0-16.0MHz/ 46mm 128 element endocavity 6V1 (Gynecology, Obstetrics, Urology), 3.0-15.0MHz/ R11mm 128 element micro-convex array C613 (Cardiology, Pediatrics), 4.0-13.0MHz/ R14mm 64 element phased array 3P-A (Cardiac, Transcranial), 1.0-6.0MHz Frequency Range: 1 -15 MHz Depth 40.0 cm Angle 180 degrees		

2018 Advanced Instrumentations Inc, is a U.S.A registered company – All rights reserved.

All functionality, features, specifications and other product information provided in this document including, but not limited to, the benefits, design, pricing, components, performance, availability, and capabilities of the product are subject to change without notice or obligation. Advanced Instrumentations reserves the right to make changes to this document and the product described herein, at any time, without obligation on Advanced Instrumentations to provide notification of such change. Actual description and specification of the product in this document may be different. Images shown here are for representational purpose only, actual may vary.

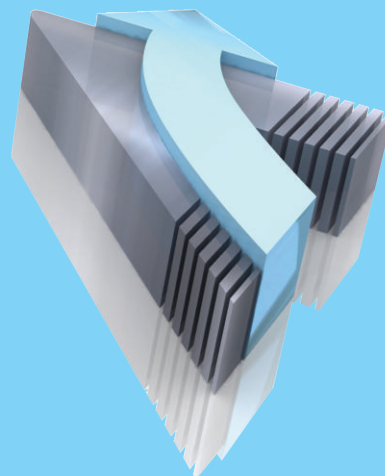
Advanced and Advanced Instrumentations trademarks and logos shown are property of Advanced Instrumentations Inc.

Success Through Quality/Since 1988

Advanced Instrumentations Inc.
Success Through Quality,
a Company You Can Trust

Advanced Instrumentations manufactures leading medical technology equipment in the areas of anesthesia, cardiology, operating room, gynecology and obstetrics, IV therapy, patient monitors, hospital furniture, neonatology and ultrasound. We deliver to the healthcare industry the highest-quality standards, reliability, and patient safety in all our products through effective, and rigorous testing procedures by our own department of Biomedical Engineering in the United States. All of our equipment comes with 2 years warranty and excellent post-sale support services.

Advanced Instrumentations Inc. Complies with the requirements of the ISO standards 9001: 2008 and 13485-2003 following the audit by one of the most prestigious global certification companies, as it is TÜV SÜD America. We comply with the requirements and are audited by the US Food and Drug Administration (FDA) an entity of the health and Human Services of the United States of America. These certifications are the result of dedication and commitment to excellence in our products and services.



6800 N.W. 77 Court,
Miami, FL 33166
U.S.A.
Phone: 305-477-6331
Fax: 305-477-5351

For additional information visit us at:
www.advanced-inst.com