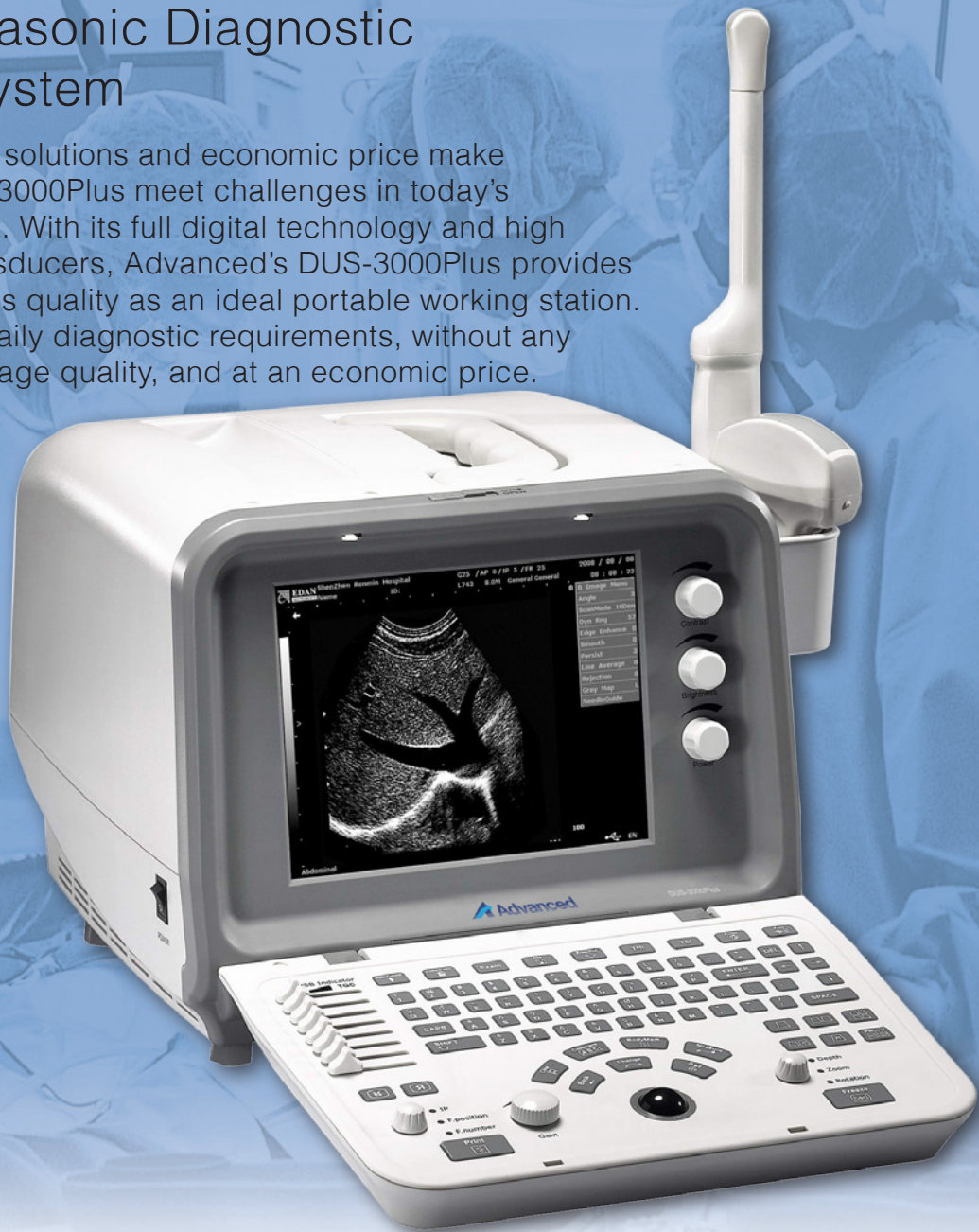


digital ULTRASOUND

DUS-3000Plus

Digital Ultrasonic Diagnostic Imaging System

Complete images solutions and economic price make Advanced's DUS-3000Plus meet challenges in today's ultrasound market. With its full digital technology and high performance transducers, Advanced's DUS-3000Plus provides the elegant images quality as an ideal portable working station. It will meet your daily diagnostic requirements, without any compromise in image quality, and at an economic price.



DUS-3000Plus

Digital Ultrasonic Diagnostic Imaging System

Technical Specifications

General:

Imaging mode: B,B+B,4B, B+M,M

Gray scales: 256

Display: 10" non-interlaced

Transducer frequency: 2.0 ~ 10MHz

Transducer connector: 2 standard

Beam-forming: Digital Beam-forming

Dynamic Receiving Focusing

Real-time Dynamic Aperture

Dynamic Frequency Scanning

Dynamic Apodization

Tissue Harmonic Imaging

Tissue Specific Imaging

Scanning angle: from 30 to 155 degree (depending on transducers)

Scanning depth (mm): from 20 to 250 (depending on transducers)

Imaging Processing:

Pre-processing: Dynamic range

Edge enhancement

Frame correlation

Line correlation

Smooth

AGC

8-segment TGC adjustment

IP (Image Process)

Post-processing: Gray map

Gamma correction

Rejection

Left-right reverse

Up-down reverse

Functions:

Cine loop: 256 frames bidirectional cine-loop

Zoom: X1.0, X1.2, X1.4, X1.6, X2.0, X2.4, X3.0, X4.0 in distance

Storage media: Built-in Flash, External USB-Memory stick

Storage: 56MB permanent image

Body mark: > 80 types

Transducer auto-detection

16-segment acoustic power output adjustment

Measurement & Calculation:

B-mode: distance, circumference, area, volume, angle, ratio, %stenosis

M-mode: distance, time, velocity, heart rate (2 cycles), slope

Software packages: abdomen, gynecology, obstetrics, urology, small parts, cardiology, orthopedics

Multi-frequency transducers



Display:

Date, Time, Probe Name, Probe Frequency, Frame Rate, Patient Name, Patient ID, Hospital Name, Measurement Values, Body Marks, Annotation, Probe Position, Full-image-region edit

Others:

Peripheral port: Video output 1
VGA output port 1
USB port 2
DICOM3.0 1 (optional)

Power supply: 100V-240V ~ 50Hz/60Hz

Dimensions: 353mm(W) X 315mm(L) X 253mm(H)

Net weight: 11.5 kg

Standard Configurations:

DUS-3000Plus main unit
10" non-interlaced monitor
Two transducer connectors
256 frames cine loop memory
56MB built-in image storage
Two USB ports
Measurement & calculation software packages
Convex array transducer: C363-1 (2.0/3.0/4.0/5.0/6.0 MHz)

Options:

Linear array transducer: L743 (6.0/7.0/8.0/9.0/10.0 MHz)
Endorectal transducer: E743 (6.0/7.0/8.0/9.0/10.0 MHz)
Endovaginal transducer: E613 (4.5/5.5/6.5/7.5/8.5 MHz)
Micro-convex array transducer: C321 (2.0/3.0/4.0/5.0/6.0 MHz)
Convex array transducer: C343-1 (2.0/3.0/4.0/5.0/6.0 MHz)

Video printer
Laser printer
Biopsy guide
DICOM3.0
Footswitch
Mobile trolley
Hand carried bag



Trolley