

CMS-1000FM
Central Monitoring System

Specification

Display

Three monitoring interfaces display
Maximum 7 waveforms display of single pregnant woman

Alarm

Aural and visual alarm system for both maternal and fetal
Parameters

Review

Four review modes

Storage

UP to 24 hours monitoring process
Up to 200 groups of NIBP lists
Large capacity storage, up to 100,000 records
Automatic data save per minute

Data management

Fuzzy/Exact search engine available

Record

High speed and quality laser printout system,
replacement of bedside printing
International/USA printing format
A4/B5 paper style
Advanced paper technology, auto print of valid data
Section printing available

Network

Wired/Wireless network structure to meet different
requirements

fetal central STATION

CMS-1000FM

Central Monitoring System



Advanced Instrumentations, Inc.
6800 N.W. 77 Court Miami, Florida 33166 U.S.A.
Tel: 305 477 6331 Fax: 305 477 5351 www.advanced-inst.com



ENG-CTG-CMS-1000FM-V1.4-20110329

All rights reserved. Features and specifications are subject to change without notice

CMS-1000FM
REV. 01
MAY 2011



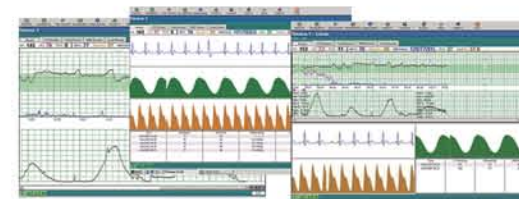


Display:

- > Colorful, high resolution monitor
- > Display information of up to 32 Fetal/Maternal monitors on a screen



- > Three monitoring interfaces: Fetal monitoring, Maternal monitoring, Fetal/Maternal monitoring
- > Maximum 7 curves of each bedside monitor display simultaneously



Alarm:

- > Aural and visual alarm system for both maternal and fetal parameters Online prompt

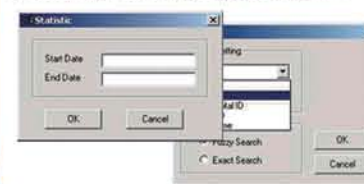
Storage:

- > Up to 24 hours monitoring process
- > Up to 200 groups of NIBP lists
- > Large capacity storage, at least 100,000 records
- > Automatic data save per minute



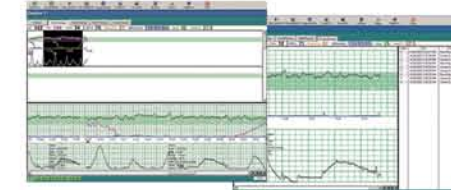
Data management:

- > Support classified user function
- > Fuzzy/Exact search engine available



Review:

- > Event review
- > CTG review



Trend review



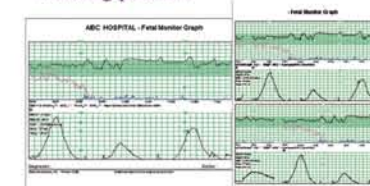
NIBP review

Print:

- > High speed and quality laser printing, instead of bedside printing International/USA printing format
- > A4/B5 paper style

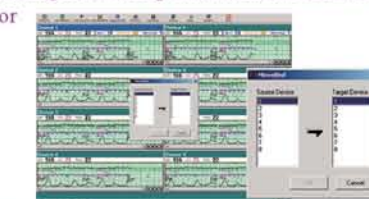


- > Enable to Select a section to print
- > Printing preview



Data transfer bed to bed:

- > Support Data transfer bed to bed, incorporating antepartum and laboring monitoring data from different bedside monitor



CMS-1000FM

Central Monitoring System

Profile

CMS-1000FM is a comprehensive central network station solution for the obstetrical care environment. It is pregnant women oriented and combines real-time monitoring surveillance, alerting, reviewing, printing, and patient information storage in one system that covers the entire continuum of obstetrical care across several pregnancies: from the very first antepartum visits to delivery. The surveillance functions present information that is transmitted from fetal and maternal monitors and generate alerts for critical events. Easy access to well-organized information improves efficiency, allowing you to focus more attention on patients and achieve the best quality of care.

Solution

Beside monitors can be connected with the CMS-1000FM system which can manage large amount of bedside fetal monitors or fetal/maternal monitors simultaneously. We provide multi-solution of central network station: Ethernet network or Wireless LAN network to meet the need of the different requirement.

Benefits of CMS-1000FM

- Offers superior surveillance, providing continuous trace and all the measurement value displays of fetus and mother
- Provides audio and visible alert, making doctors and nurses immediately awareness of critical event
- Stores monitoring data and traces up to 100,000 patients
- Display CMS-1000FM alerts even when other clinical applications are in use
- Save time and effort with an friendly user interface